



**Office of Institutional Research, Assessment and Accreditation**

# **Enrollment At-A-Glance Report: Fall 2019**

**Rush University**

**Prepared by the:**

Office of Institutional Research, Assessment and Accreditation

---

## About Rush University

Rush University is a private health sciences institution based in the Illinois Medical District, near Chicago's Loop. We offer more than 24 degree and certificate programs across medicine, nursing, allied health and biomedical research; more than 60 postgraduate training programs for medical residents and fellows; and continuing education options.

The University is located on the campus of Rush University Medical Center, a nationally ranked academic medical center specializing in leading-edge patient care and research.

Rush University offers a wide range of education and training options to prepare students for the next step in their health care career. Academic programs are offered through our four colleges:

- Rush Medical College (founded in 1837)
- Rush University College of Nursing (founded in 1972)
- The College of Health Sciences at Rush University (founded in 1975)
- The Graduate College at Rush University (founded in 1981)

## Mission

Rush University provides outstanding health sciences education and conducts impactful research in a culture of inclusion, focused on the promotion and preservation of the health and well-being of our diverse communities.

## Vision

The Rush learning community will be the leading health sciences university committed to transforming health care through innovative research and education.

## Values

Rush University's core values — innovation, collaboration, accountability, respect and excellence — are the roadmap to our mission and vision.

These five values, known as our I CARE values, convey the philosophy behind every decision Rush employees make.

Rush employees also commit themselves to executing these values with compassion. This translates into a dedication — shared by all members of the Rush community — to providing the highest quality patient care.

## Leadership

Sherine E. Gabriel, MD, MSc  
President, Rush University  
Chief Academic Officer, the Rush University System for Health

Susan L. Freeman, MD, MS  
Provost

Marquis D. Foreman, PhD, RN, FAAN  
Dean, College of Nursing

Dino P. Rumoro, DO, MPH  
Acting Dean, Rush Medical College

Andrew Bean, PhD  
Dean, Graduate College

Charlotte B. Royeen, PhD, OTR/L, FAOTA  
Dean, College of Health Sciences

## Rush University Facts

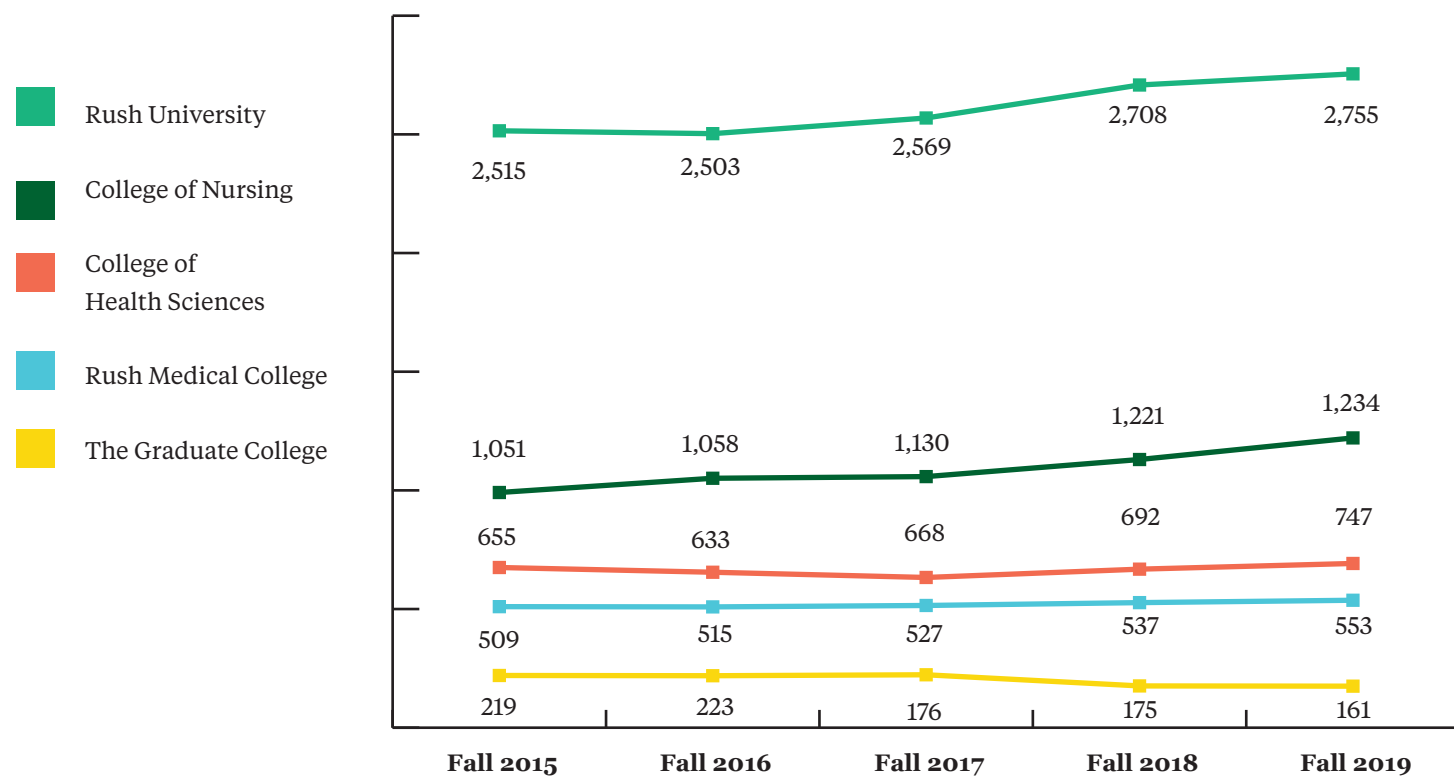
- **Total enrollment Fall 2019:** 2,755
- **Female:** 75 percent
- **Male:** 25 percent
- **Average age:** 29
- **Total new students enrollment Fall 2019:** 819
- **Total degrees awarded in academic year 2018-19:** 859
- **Number of residents and fellows (2018):** 733
- **Number of living alumni (2018):** 16,783

---

# Rush University Headcount Enrollment

Headcount Enrollment by College					
College/Term	Fall 2015	Fall 2016	Fall 2017	Fall 2018	Fall 2019
College of Health Sciences	655	633	668	692	747
College of Nursing	1051	1058	1130	1221	1234
Rush Medical College	509	515	527	537	553
The Graduate College	219	223	176	175	161
Non-Degree Seeking	81	74	68	83	60
<b>Rush University</b>	<b>2515</b>	<b>2503</b>	<b>2569</b>	<b>2708</b>	<b>2755</b>

**Note:** Beginning fall 2017, the PhD in Health Sciences and PhD in Nursing are, now, listed under their respective colleges although the degrees are conferred by the Graduate College. The decrease in enrollment for The Graduate College is a result of reallocation of the enrollments to their respective colleges and not a result of a drop in enrollment.



Enrollment by Program					
College of Health Sciences (CHS)	FA2015	FA2016	FA2017	FA2018	FA2019
Audiology, AuD	53	59	56	61	62
Clinical Laboratory Management, MS	42	41	43	36	37
Clinical Nutrition, MS	33	31	31	34	34
Health Sciences, BS	26	27	27	37	36
Health Sciences, PhD (Note: From FA17, reporting moved from GC to CHS)	--	--	41	49	49
Health Systems Management, MS	55	59	58	61	63
Imaging Sciences, BS	37	44	52	57	50
Medical Laboratory Science, BS	27	16	--	--	--
Medical Laboratory Science, MS	29	26	29	36	38
Occupational Therapy, MS	75	74	37	2	1
Occupational Therapy Doctorate (New program starting from FA17)	--	--	36	72	109
Perfusion Technology, BS	7	3	--	--	--
Perfusion Technology, MS	28	33	39	37	33
Physician Assistant Studies, MS	91	91	87	86	87
Research Administration, MS	11	1	--	--	--
Respiratory Care, BS	7	3	--	--	--
Respiratory Care, MS	42	35	36	21	30
Specialist in Blood Bank, Cert.	8	4	7	11	22
Speech Language Pathology, MS	54	57	61	66	72
Vascular Ultrasound, BS	30	29	29	26	24
<b>Total College of Health Sciences</b>	<b>655</b>	<b>633</b>	<b>668</b>	<b>692</b>	<b>747</b>

College of Nursing (CON)	FA2015	FA2016	FA2017	FA2018	FA2019
Masters of Science in Nursing, MSN	335	323	330	356	359
PhD in Nursing (Note: From FA17, reporting moved from GC to CON)	--	--	24	28	29
Post-Graduate Nursing, Cert.	13	14	14	20	14
Doctor of Nursing Practice, DNP	703	721	762	817	832
<b>Total College of Nursing</b>	<b>1051</b>	<b>1058</b>	<b>1130</b>	<b>1221</b>	<b>1234</b>

Doctor of Philosophy (PhD) Programs	FA2015	FA2016	FA2017	FA2018	FA2019
Anatomy and Cell Biology	6	5	3	3	1
Biochemistry	15	12	9	9	5
Biomechanics	4	3	2	2	1
Health Sciences	14	21	34	41	49
Immunology/Microbiology	10	7	5	3	1
Integrated Biomedical Sciences	--	11	24	32	44
Molecular Biophysics/Physiology	2	1	1	--	--
Neuroscience	8	6	5	3	2
Nursing	36	30	27	24	28
Pharmacology	--	5	4	3	2

Rush Medical College (RMC)	FA2015	FA2016	FA2017	FA2018	FA2019
M1	130	138	136	149	149
M2	131	129	140	129	147
M3	121	133	127	131	125
M4	127	115	124	128	132
<b>Total Rush Medical College</b>	<b>509</b>	<b>515</b>	<b>527</b>	<b>537</b>	<b>553</b>

Graduate College (GC)	FA2015	FA2016	FA2017	FA2018	FA2019
Anatomy & Cell Biology, MS/PhD	9	5	3	1	--
Biochemistry, MS/PhD	18	9	9	5	4
Biomechanics, MS/PhD	4	2	2	1	--
Biotechnology, MS	31	31	34	34	24
Clinical Research, MS	69	57	67	69	62
Health Sciences, PhD (Note: From FA17, reporting moved to CHS)	21	34	--	--	--
Immunology/Microbiology, MS/PhD	11	9	4	1	1
Integrated Biomedical Sciences, MS	--	15	19	16	14
Integrated Biomedical Sciences, PhD	11	24	32	44	55
Neuroscience, PhD	6	5	3	2	1
Nursing, PhD (Note: From FA17, reporting moved to CON)	30	27	--	--	--
Pharmacology, MS/PhD	8	4	3	2	--
Molecular Biophysics/Physiology, PhD	1	1	--	--	--
<b>Total Graduate College</b>	<b>219</b>	<b>223</b>	<b>176</b>	<b>175</b>	<b>161</b>

	FA2014	FA2015	FA2016	FA2017	FA2018
<b>Non-Degree Seeking</b>	<b>81</b>	<b>74</b>	<b>68</b>	<b>83</b>	<b>60</b>

Headcount Enrollment by Degree Level	Fall 2017		Fall 2018		Fall 2019	
	N	% of Total	N	% of Total	N	% of Total
<b>Undergraduate Students</b>	107	4%	120	4%	110	4%
<b>Graduate Students (MS/MSN)</b>	872	34%	854	32%	854	31%
<b>Research Doctorates (PhD)</b>	120	5%	133	5%	139	5%
<b>Professional Doctorates (AUD, OTD, DNP, MD)</b>	1381	54%	1487	55%	1556	56%
<b>Certificates</b>	21	1%	31	1%	36	1%
<b>Non-Degree Seeking</b>	68	3%	83	3%	60	2%
<b>Rush University</b>	<b>2569</b>	<b>100%</b>	<b>2708</b>	<b>100%</b>	<b>2755</b>	<b>100%</b>

Headcount Enrollment by Full-time/Part-time Status	Fall 2017		Fall 2018		Fall 2019	
	N	% of Total	N	% of Total	N	% of Total
<b>Full-time</b>	1581	62%	1660	61%	1646	60%
<b>Part-time</b>	988	38%	1048	39%	1109	40%
<b>Rush University</b>	<b>2569</b>	<b>100%</b>	<b>2708</b>	<b>100%</b>	<b>2755</b>	<b>100%</b>

Headcount Enrollment by Gender	Fall 2017		Fall 2018		Fall 2019	
	N	% of Total	N	% of Total	N	% of Total
<b>Female</b>	1885	73%	2014	74%	2078	75%
<b>Male</b>	684	27%	694	26%	677	25%
<b>Rush University</b>	<b>2569</b>	<b>100%</b>	<b>2708</b>	<b>100%</b>	<b>2755</b>	<b>100%</b>

Headcount Enrollment by Race/Ethnicity	Fall 2017		Fall 2018		Fall 2019	
	N	% of Total	N	% of Total	N	% of Total
<b>American Indian or Alaskan Native</b>	2	0%	1	0%	3	0%
<b>Asian</b>	339	13%	289	11%	245	9%
<b>Black/African American</b>	155	6%	178	7%	203	7%
<b>Hispanic</b>	239	9%	274	10%	322	12%
<b>Two or More Races</b>	72	3%	62	2%	51	2%
<b>Native Hawaiian or Pacific Islander</b>	1	0%	3	0%	3	0%
<b>Unknown</b>	155	6%	216	8%	247	9%
<b>White</b>	1606	63%	1685	62%	1681	61%
<b>Rush University</b>	<b>2569</b>	<b>100%</b>	<b>2708</b>	<b>100%</b>	<b>2755</b>	<b>100%</b>
<b>All Minority</b>	<b>808</b>	<b>31%</b>	<b>807</b>	<b>30%</b>	<b>827</b>	<b>30%</b>

Headcount Enrollment by Age Group	Fall 2017		Fall 2018		Fall 2019	
	N	% of Total	N	% of Total	N	% of Total
<b>Under 20 or 20</b>	7	0%	4	0%	1	0%
<b>21-25</b>	886	34%	901	33%	875	32%
<b>26-30</b>	933	36%	1011	37%	1070	39%
<b>31-35</b>	372	14%	414	15%	397	14%
<b>36-40</b>	162	6%	175	6%	191	7%
<b>Over 40</b>	209	8%	203	7%	221	8%
<b>Rush University</b>	<b>2569</b>	<b>100%</b>	<b>2708</b>	<b>100%</b>	<b>2755</b>	<b>100%</b>
<b>Average Age</b>	<b>29</b>		<b>29</b>		<b>29</b>	

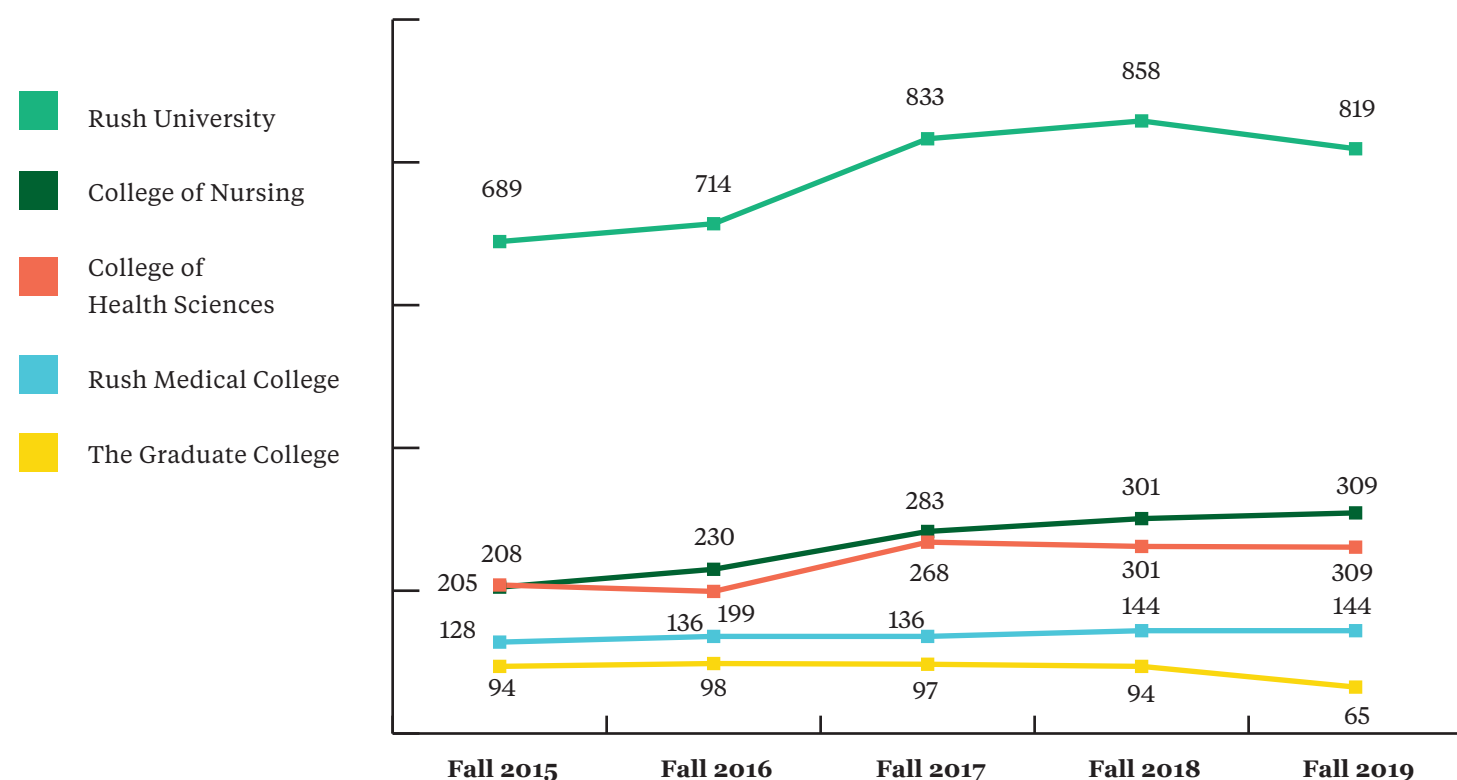
---

**Rush University  
New Students Enrollment  
& Degrees Awarded**

New Students** Enrollment by College					
College/Year	FA2015	FA2016	FA2017	FA2018	FA2019
College of Health Sciences	208	199	268	262	261
College of Nursing	205	230	283	301	309
Rush Medical College	128	136	136	144	144
The Graduate College*	94	98	97	94	65
Non-Degree Seeking	54	51	49	57	40
<b>Rush University</b>	<b>689</b>	<b>714</b>	<b>833</b>	<b>858</b>	<b>819</b>

\* Beginning fall 2017, the PhD in Health Sciences and PhD in Nursing are, now, listed under their respective colleges although the degrees are conferred by the Graduate College. The decrease in enrollment for the Graduate College is a result of reallocation of the enrollments to their respective colleges and not a result of a drop in enrollment.

\*\*New students who started in the fall term only.



New Students Enrollment by Program					
College of Health Sciences (CHS)	FA2015	FA2016	FA2017	FA2018	FA2019
Audiology, AuD	13	19	14	15	13
Clinical Laboratory Management, MS	18	16	20	14	17
Clinical Nutrition, MS	14	14	16	18	16
Health Sciences, BS	14	15	13	23	12
Health Sciences, PhD (Note: From FA17, reporting moved from GC to CHS)	--	--	11	9	4
Health Systems Management, MS	27	27	29	29	28
Imaging Sciences, BS	12	15	20	18	11
Medical Laboratory Science, BS	15	1	--	--	--
Medical Laboratory Science, MS	16	11	19	20	17
Occupational Therapy Doctorate (New program starting from FA17)	--	--	36	36	38
Perfusion Technology, BS	3	--	--	--	--
Perfusion Technology, MS	15	19	21	16	18
Respiratory Care, BS	3	--	--	--	--
Respiratory Care, MS	13	15	15	9	17
Specialist in Blood Bank, Cert.	4	3	5	8	21
Speech Language Pathology, MS	27	30	34	32	39
Vascular Ultrasound, BS	14	14	15	15	10
<b>Total College of Health Sciences</b>	<b>208</b>	<b>199</b>	<b>268</b>	<b>262</b>	<b>261</b>

College of Nursing (CON)					
	FA2015	FA2016	FA2017	FA2018	FA2019
Masters of Science in Nursing, MSN	58	82	85	89	89
PhD in Nursing (Note: From FA17, reporting moved from GC to CON)	--	--	3	7	7
Post-Graduate Nursing, Cert.	2	2	4	6	3
Doctor of Nursing Practice, DNP	145	146	191	199	210
<b>Total College of Nursing</b>	<b>205</b>	<b>230</b>	<b>283</b>	<b>301</b>	<b>309</b>



Rush Medical College (RMC)	FA2015	FA2016	FA2017	FA2018	FA2019
M1	128	136	136	144	144

Graduate College (GC)	FA2015	FA2016	FA2017	FA2018	FA2019
Anatomy & Cell Biology, MS/PhD	4	--	--	--	--
Biochemistry, MS/PhD	3	--	--	--	--
Biotechnology, MS	31	31	34	34	24
Clinical Research, MS	28	33	45	40	24
Health Sciences, PhD (Note: From FA17, reporting moved to CHS)	6	5	--	--	--
Immunology/Microbiology, MS/PhD	4	--	--	--	--
Integrated Biomedical Sciences, MS	--	13	9	8	5
Integrated Biomedical Sciences, PhD	11	13	9	12	12
Nursing, PhD (Note: From FA17, reporting moved to CON)	7	3	--	--	--
<b>Total Graduate College</b>	<b>94</b>	<b>98</b>	<b>97</b>	<b>94</b>	<b>65</b>

Non-Degree Seeking	FA2014	FA2015	FA2016	FA2017	FA2018
CHS, SAL	0	2	2	0	3
CON, SAL	54	46	47	54	33
GC, SAL	0	3	0	3	4
<b>Total, SAL</b>	<b>54</b>	<b>51</b>	<b>49</b>	<b>57</b>	<b>40</b>

New Students Enrollment by Degree Level						
	Fall 2017		Fall 2018		Fall 2019	
	N	% of Total	N	% of Total	N	% of Total
Undergraduate Students	48	6%	56	7%	33	4%
Graduate Students (MS/MSN)	327	39%	309	36%	294	36%
Research Doctorates (PhD)	23	3%	28	3%	23	3%
Professional Doctorates (AUD, OTD, DNP, MD)	377	45%	394	46%	405	49%
Certificates	9	1%	14	2%	24	3%
Non-Degree Seeking 49 6% 57 7% 40 5%	49	6%	57	7%	40	5%
<b>Rush University</b>	<b>833</b>	<b>100%</b>	<b>858</b>	<b>100%</b>	<b>819</b>	<b>100%</b>

New Students Enrollment by Gender						
	Fall 2017		Fall 2018		Fall 2019	
	N	% of Total	N	% of Total	N	% of Total
American Indian or Alaskan Native	2	0%	0	0%	1	0%
Asian	106	13%	61	7%	58	2%
Black/African American	60	7%	72	8%	70	3%
Hispanic	93	11%	99	12%	117	4%
Two or More Races	22	3%	14	2%	17	1%
Native Hawaiian or Pacific Islander	0	0%	1	0%	1	0%
Unknown	53	6%	91	11%	93	3%
White	497	60%	520	61%	462	17%
<b>Rush University</b>	<b>833</b>	<b>100%</b>	<b>858</b>	<b>100%</b>	<b>819</b>	<b>100%</b>
<b>All Minority</b>	<b>283</b>	<b>34%</b>	<b>247</b>	<b>29%</b>	<b>264</b>	<b>32%</b>

Degrees Awarded* by College			
	AY 2016-17	AY 2017-18	AY 2018-19
College of Health Sciences	284	235	277
College of Nursing	366	307	375
Rush Medical College	114	131	127
The Graduate College**	71	80	80
<b>Rush University</b>	<b>835</b>	<b>753</b>	<b>859</b>

\*Degrees Awarded between July 1 and June 30 of years indicated.

\*\*Students who graduated from Nursing, PhD and Health Sciences, PhD are reported under The Graduate College.

Degrees Awarded* by College			
	AY 2016-17	AY 2017-18	AY 2018-19
Bachelor's	55	37	43
Master's	423	369	435
Research Doctorates (PhD)	13	14	17
Professional Doctorates (AUD, DNP, MD)	317	313	333
Post-Baccalaureate Certificate	13	10	17
Post-Master's Certificate	14	10	14
<b>Rush University</b>	<b>835</b>	<b>753</b>	<b>859</b>

