



# 2021 Orientation





## Welcome to Rush University!

We are pleased to have the opportunity to welcome you on your orientation day and look forward to helping you settle into your role as a student at Rush.

This orientation guide serves as a tool to allow you to acquaint yourself with University offices and student support services that will assist you during your time at Rush University. Many more resources—including guidelines for using Rush University technology, tip sheets for e-learning and more—can be found on the **Online Orientation Materials page** on our website. We strongly encourage you to review all the resources presented to make sure you have the best experience possible during your program. Please remember to **complete the mandatory onboarding checklist by September 9, 2021.**

Always feel free to reach out and ask questions of any of these offices. If you aren't sure who to ask about a specific question, you can email **Student\_Affairs@rush.edu** and we will direct you to the right place.

You are going to do amazing things at Rush, and the whole Rush community is here to support you in your endeavors. **Please enjoy this welcome message** from Rush University President Sherine E. Gabriel, MD, MSc.

# Table of Contents

## Resources

<a href="#">Library</a>	5
<a href="#">Student Accessibility Services</a>	6
<a href="#">Center for Clinical Wellness</a>	7
<a href="#">More Wellness Resources</a>	8
<a href="#">Health Insurance</a>	9

## Organizations

<a href="#">Office of Student Life and Engagement</a>	11
<a href="#">Student Senate</a>	12
<a href="#">Office of Student Diversity and Community Engagement</a>	13
<a href="#">The Office of Global Health</a>	14

## Essentials

<a href="#">Housing</a>	16
<a href="#">Dining</a>	17
<a href="#">RU Alert System</a>	18
<a href="#">Student Complaint Portal / Rush Hotline</a>	19
<a href="#">Social Media</a>	20
<a href="#">Campus Map</a>	21

**Rush University**

**Resources**

## Library

The Library of Rush University Medical Center is here to make your life easier! We can help you locate resources, search the literature, manage citations and more. Our resources include the following:

- Collection of books and journals
- Citation management tool (RefWorks)
- Databases (e.g. PubMed, CINAHL, UpToDate)
- Study rooms and carrels
- Computer lab
- Copier/printer

### Library Account Registration

Rush students are automatically registered with the library. Other Rush users can sign up in person or online. Once registered, your Rush ID becomes your library card.

[Sign up or update your library account here.](#)

### Off-Campus Access

With your proxy login, you can access resources from off campus. Simply go to the Library homepage, browse resources as usual. When prompted, simply log in with your Rush Network ID.

### Staffed hours

**Monday to Friday: 8:00 a.m. to 5:00 p.m.**  
**Saturday: 10:00 a.m. to 5:00 p.m.**  
 (chat available until 6:00 p.m.)

**All library spaces are available 24/7 via badge access.**

### Beyond Rush

If you can't find what you're looking for in our collection, you have access to I-Share and ILLiad, which allow you to request materials from other libraries.

[ASK A QUESTION](#)

Have a question? Click on the [Ask a Question](#) button at the top of our website. Or make use of the chat widget during staffed hours. For off-hours requests, please either send us an email or make use of the Ask a Question button. [Learn more.](#)

#### The Library of RUMC

Email



[lib\\_ref@rush.edu](mailto:lib_ref@rush.edu)

Phone



(312) 942-5950

Location



**Armour Academic Center,  
600 S Paulina St., Suite 571**

Website



[rushu.libguides.com](http://rushu.libguides.com)

## Student Accessibility Services

Rush University is committed to attracting and educating students who will help to make the population of health care professionals reflective of the national population, including individuals with disabilities.

### Services

Our goal is to ensure equal access to facilities, programs and services at Rush for students with disabilities. The Office of Student Accessibility Services is your go-to resource for disability-related questions, providing an individualized, interactive experience to help meet your needs.

Students are encouraged to apply for accommodations promptly after being admitted but may apply at any time throughout their program. Students seeking accommodations are required to complete and submit the following:

- A request for accommodation online form
- Documentation stating a disability

“We’re here to help you fulfill your potential as a valued member of the Rush University community as a future health care leader.”

— **Marie Lusk**, *Director*  
Office of Student Accessibility Services

**Forms can be found online.**

#### The Office of Student Accessibility Services

Email



**studentaccessibility@rush.edu**

Phone



**(312) 942-5237**

Location



**Armour Academic Center, 600 S Paulina St., Suite 901**

Website



**[rushu.rush.edu/office-student-accessibility-services](https://rushu.rush.edu/office-student-accessibility-services)**



## Rush Wellness Center for Clinical Wellness

Recharge your well-being with the Center for Clinical Wellness (CCW), our hub for all things wellness at Rush.

### Services include the following:

- Counseling
- Coaching
- Energy Pod

Students can make appointments online via the Rush Portal for Well-Being Coaching, Counseling or a Mini Wellness Retreat. Find out more on the Center for Clinical Wellness [webpage](#).



### Rush Wellness Center for Clinical Wellness

Online



[insiderush.rush.edu/wellness](https://insiderush.rush.edu/wellness)

Location



Rush Triangle Office Building, 1700 W Van Buren Street, Suite 150

## More Wellness Resources

### Wellness on Demand

Student-led group that focuses on supporting Rush students in their quest to lead truly healthy lives. [Learn more.](#)

### Rush University Student Wellness Association (RU Well)

Online yoga, fitness and meditation classes are available with YogaWorks. Rush University students who sign up receive six months free. [Learn more.](#)

### National Suicide Prevention Lifeline

Free, confidential support for people in distress, including a crisis text line (741-741).

[suicidepreventionlifeline.org](https://suicidepreventionlifeline.org)

### ULifeline Anonymous Self Evaluator

The Self Evaluator screens for 13 of the most common mental health conditions that students face. This screening does not provide a diagnosis, but identifies problems that could be impacting thoughts, feelings and behaviors. The screening process also provides information on these conditions and how to reach out for help.

[ulifeline.org/rush/self\\_evaluator](https://ulifeline.org/rush/self_evaluator)

### Rush Wellness Assistance Program

A comprehensive, system-wide resource for all Rush employees, students and their families.

- **Work:** Professional and personal development through “Skillbuilders” — free 30- to 45-minute online tutorials that address numerous topics, including emotional well-being, achieving personal goals, managing stress, time management, the power of resilience and much more.
- **Life:** 24/7 Confidential, short-term counseling services, including videoconferencing available on mobile devices.
- **Home:** Connecting Rush community members to pre-screened services for child and elder care, legal support and financial planning. [Learn more.](#)

To access on your mobile device, visit the **App Store (iPhone)** or **Google Play (Android)** to download.



Zoom for mobile videoconferencing telehealth.



Spark Perspectives for Rush Wellness Assistance Program services.

#### The Rush Wellness Assistance Program

Online



[insiderush.rush.edu/wellness](https://insiderush.rush.edu/wellness)

Phone



(833) 304-3627



## Student Health Insurance Plan

Rush University policy requires all students to have quality health insurance. Students in Rush Medical College are automatically enrolled in the Student Health Insurance Plan, underwritten by Blue Cross and Blue Shield of Illinois (BCBSIL).

**This plan meets or exceeds a Gold-medal level of coverage.**

- Affordable, quality coverage compatible with the Affordable Care Act
- Academic Emergency Services (AES)\*
- Covers you at school, at home and while traveling abroad
- Access to a broad Participating Provider Organization (PPO) Network from BCBSIL
- Access to multilingual 24/7 Nurseline
- Discounts on vision, fitness and much more

**Rush Medical College students who wish to add dependents will need to contact the Office of Financial Affairs; call (312) 942-5257 or send an email to [financial\\_affairs@rush.edu](mailto:financial_affairs@rush.edu).**

Enrollment in the plan for all College of Health Sciences, College of Nursing and Graduate College students is required unless the student provides proof of coverage under a comparable plan. Students in these three colleges may enroll online at [rush.myahpcare.com](https://rush.myahpcare.com). The set premium will be charged to your tuition bill. If you have comparable coverage through another insurance carrier, you can show proof of comparable coverage and attach a copy of your health insurance ID card online at [rush.myahpcare.com](https://rush.myahpcare.com).

Once enrolled in the Student Health Insurance Plan, coverage will be in effect until the student graduates or provides proof of other comparable coverage. Also, please note that no pro-rata refunds will be given once enrolled in the program.

If you do not waive coverage by the deadline, the premium will be charged to your Rush student account. No changes will be made to a student's Rush account after the waiver deadline.

Please note that dependents must be enrolled at the time the student enrolls and their coverage will coincide with that of the student. Dependent coverage will automatically be advanced from one coverage period to the next (the same as the student) until we are advised by the school to remove the dependent coverage or until the student is no longer covered under the plan. Dependents cannot purchase coverage unless the student has purchased coverage. **To view rates and enrollment information, please go to [rush.myahpcare.com](https://rush.myahpcare.com).**



### Academic Blue<sup>SM</sup> Student Health insurance Plan

For additional info



[rush.myahpcare.com](https://rush.myahpcare.com)

Phone



(855) 343-8388

**Rush University**

**Organizations**

## Office of Student Life and Engagement

The Office of Student Life and Engagement is committed to providing an atmosphere that will enhance each student's academic experience and connection to Rush.

### Student Organizations

Rush University is home to 40 student organizations that you can get involved in, including special interest, academic and multicultural groups. For more information about getting involved please visit: [rushu.rush.edu/getting-involved](https://rushu.rush.edu/getting-involved).



### Career Services

We offer curriculum vitae (CV) and résumé review and provide interview preparation support.

### Chicago Services

Our office can provide you with information on transportation in Chicago. Student benefits also include free or reduced rates for local museums and Divvy bikes.

### Student Lounge

#### Armour Academic Center, Room 992

Take advantage of our kitchenette with microwaves and refrigerators.

#### Office of Student Life and Engagement

Email → [student\\_life@rush.edu](mailto:student_life@rush.edu)

Phone → (312) 942-6302

Location → Armour Academic Center,  
600 S Paulina St., Room 984

Website → <https://tinyurl.com/2c8yvvse>

## Student Senate

**Mission:** To bring together student representatives from each college at Rush University to serve as liaisons between students, faculty and administration to address common issues affecting all students and to promote interdisciplinary activity.

### Responsibilities

Student Senate meetings are held twice a month. It is the obligation of every officer to attend a minimum of 12 meetings an academic year. Each elected board member shall serve for at least one year. Other duties include planning Student Senate events, voicing student concerns, serving on search and university committees, etc.

### Membership

If interested in joining Student Senate or for more information, please email **Student\_Senate@rush.edu**.

Elections for open positions are held in fall.

#### Officers

- **Chair**
- **Vice Chair**
- **Treasurer**
- **Secretary**
- **Media Liason**
- **Wellness Chair**
- **(8) Student Senators –**

*College Representatives:*  
Such representatives are responsible for the faithful and diligent representation of the interests of their constituents.

#### Rush University Student Senate

Email



**Student\_Senate@rush.edu**

Webpage



**[tinyurl.com/rushu-student-senate](https://tinyurl.com/rushu-student-senate)**

## Office of Student Diversity and Community Engagement

Our goal is to help develop health care professionals who are reflective of the communities, patients and region we serve, and who have gained an understanding of the many forms of diversity.

### Student Affinity Groups

Our student affinity groups strive to create a welcoming and supportive environment for students from all backgrounds. In collaboration with our office, these groups host co-curricular activities that raise the level of awareness and appreciation for the many types of diversity at Rush.

#### The following is a list of our student affinity groups:

- American Medical Women's Association (AMWA)
- Asian Pacific American Medical Student Association (APAMSA)
- American Women Surgeons (AWS)
- Interprofessional Minority Student Association (IMSA)
- Latino Medical Student Association (LMSA)
- Student National Medical Association (SNMA)
- Rush Christian Fellowship (RCF)
- Rush Jewish Student Association (JSA)
- Rush Muslim Student Association (MSA)
- Rush South Asian Student Association (SASA)
- Rush Pride
- Rush University Diversity and Inclusion (RUDI)

### Rush Community Service Initiatives Program

The mission of the Rush Community Service Initiatives Program, or RCSIP, is to provide community-based volunteer experiences for Rush students. These experiences enhance our students' ability to work in interprofessional teams, develop patient relationships, care for diverse populations and provide targeted services based on community need. RCSIP achieves its mission through the following:

- Aligning volunteer experiences with the findings from the Rush Community Health Needs Assessment
- Developing community programs that align with Rush's community implementation plan
- Providing appropriate support and training for student volunteers
- Accessing the outcomes of community programs
- Evaluating the effects of community service experiences on the personal learning and development of the students

For additional information please contact:  
Sharon Gates, Senior Director, Community Engagement at (312) 942-3670 or [Sharon\\_Gates@rush.edu](mailto:Sharon_Gates@rush.edu).

#### Office of Student Diversity and Community Engagement

Email



[Student\\_Diversity@rush.edu](mailto:Student_Diversity@rush.edu)

Webpage



[tinyurl.com/rushu-SDMA](https://tinyurl.com/rushu-SDMA)

## The Office of Global Health

Rush University promotes involvement in voluntary global health initiatives that allow our students, residents, fellows, faculty and staff to bring their skills to populations in need and grow as health care professionals.

### Service Learning Opportunities through the Office of Global Health

All students are eligible to participate in service learning opportunities through multiple avenues. Opportunities for the 2021-22 primary care and surgical service trips are available on the [Global Health webpage](#).

### Rush Students for Global Health

Rush Students for Global Health seek to introduce and cultivate an interest in global health and global health medicine within the Rush University community by promoting awareness of current issues in the practice of global health and medicine through lectures and forums and by advertising international medical experiences available to all Rush University students, residents and attending physicians.

### M4 Elective

The purpose of this elective is to provide medical students with exposure to a global health curriculum and an opportunity for service-learning in a developing country. Curriculum is delivered primarily through self-study. It covers social determinants, ethics, and framework for addressing communicable and noncommunicable diseases from clinical, epidemiologic and public health perspectives. Options for clinical service-learning include all sites endorsed by the Office of Global Health and the AAMC VSLO program.

### Rush Interdisciplinary Service Experience (RISE)

RISE provides a structured curriculum and scholarly focus to the community service component of the service experience. Each year there is a different project, which is conducted over spring break. All students are invited to apply. To get comprehensive details on this year's project and logistical details, [visit the RISE page](#).

#### The Office of Global Health

Call



(312) 563-6395

Email



[Global\\_Health@rush.edu](mailto:Global_Health@rush.edu)

Website



[rushu.rush.edu/about/faculty-affairs/global-health](https://rushu.rush.edu/about/faculty-affairs/global-health)



**Rush University**

**Essentials**

## Housing

### Tailor Lofts Student Apartments

Rush University has a block of units at Tailor Lofts Student Apartments at a discounted rate for currently enrolled students.

Rush has discounted rates for registered students in applicable units. For additional information and to view the property and the full list of amenities online please visit [tailorlofts.info](https://tailorlofts.info) and please contact **Student\_Affairs@rush.edu** for any Rush related questions.

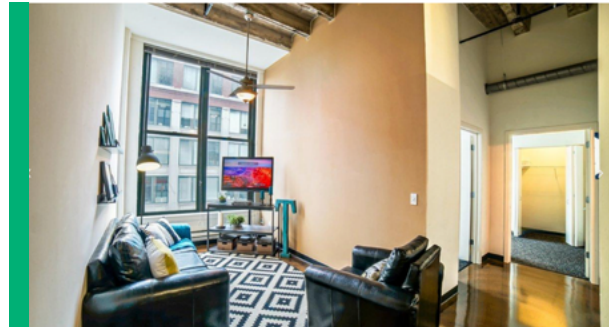
There are limited units available and they fill up quickly. Interested Rush students should contact the Tailor Lofts leasing managers to schedule a tour and to begin the application process. Be sure to mention that you are a Rush University student when applying.

#### Tailor Lofts Student Apartments

315 S. Peoria St., Chicago, IL 60607  
(312) 563-5638 [tailorlofts.info](https://tailorlofts.info)

#### Leasing managers:

Briana Russell: [brianar@booknladder.com](mailto:brianar@booknladder.com)  
Ranna Patel: [rannap@booknladder.com](mailto:rannap@booknladder.com)



#### Some amenities include:

- 24-hour security presence at the first-floor entrance
- Wi-Fi throughout the building
- 24-hour Mac computer center
- 24-hour fitness center
- Full kitchens in every unit
- Free campus shuttle stop outside the building
- On-site parking (for an additional charge)
- Rent is included on the Rush bill, along with tuition and any related student fees

#### Office of Student Life and Engagement

Email



[Student\\_Life@rush.edu](mailto:Student_Life@rush.edu)

Phone



(312) 942-6302

Website



[rushu.rush.edu/rush-experience/student-services/housing](https://rushu.rush.edu/rush-experience/student-services/housing)

## Dining

### West Side Food Hall

- The West Side Food Court is located on the 2nd floor of the Armour Academic Center off Paulina Avenue.
- The West Side Food Court offers a widely diverse menu that caters to all appetites. New entrees are added on a regular basis. A large variety of “Grab and Go” items are available daily.

#### Hours of Operation:

**6:30 a.m. to 3:30 p.m., Monday - Friday**

**Closed Saturday and Sunday**

### In a Rush Kiosk

- Located in the North dining room of the cafeteria, on the 2nd floor of the Armour Academic Center.
- In A Rush offers a variety of espressos, gourmet coffee drinks, teas and smoothies. The kiosk has an assortment of freshly baked pastries, “Grab and Go” sandwiches and salads.

#### Hours of Operation:

**6:30 a.m. to 4:30 p.m., Monday - Friday**

**Closed Saturday and Sunday**

## Vending

A variety of vending machines are located throughout campus including Farmer's Fridge.

## Additional Food Options Coming This Fall



### Starbucks

Starbucks will open on campus this fall on the southwest corner of Paulina and Harrison streets.

### Panera Bread

Panera Bread is set to open in late summer or early fall.

**For other campus dining options please visit:**  
[rush.edu/patients-visitors/dining-options](https://rush.edu/patients-visitors/dining-options)



## How should you be informed in an emergency?

Emergency situations can happen anywhere, at any time. Be ready with RU Alert — Rush’s emergency alert system for Rush employees, faculty and students.

### What do you need to do?

RU Alert only knows your Rush email, so tell us ALL the ways you want to be contacted — text, phone, email — so we can reach you quickly when seconds count. [Update your profile here](#).

**RU Alert will only be used for critical emergencies.**

#### RU Alert system

---

Website



<http://mobileweb.rush.edu/secure/optin>

When something just doesn't seem right

# Speak up!

Confidential, anonymous toll-free phone or web reporting available 24 hours a day, 7 days a week.

## Student Complaint Portal

Student complaints regarding services, academic programs, improper conduct or other challenges impacting the student's experience may be addressed informally such as following up with the specific staff or faculty affiliated with a particular issue.

In the case where a student feels their complaint would be best handled through formal procedures, Rush University offers a process for students to confidentially submit their formal complaints through the Student Complaint Portal.

Certain complaints have specific procedures, such as Title IX sexual misconduct or grade appeals. Under circumstances where a student files a formal complaint through the Student Complaint Portal requiring a specific procedure or contact person, the complaint will automatically be routed to the appropriate area for additional review and follow-up.



## Rush Hotline

Rush is an organization with a strong commitment to compliance, ethics and respect in the clinical and academic settings.

Rush wants you to feel comfortable in approaching your supervisor/management or faculty/college administrator with questions and concerns including instances where you believe violations of standards, policies or inappropriate behavior may have occurred.

To encourage and support reporting of issues or concerns by our employees, students, patients, vendors and others, Rush has established phone and Internet-based reporting Hotline services.

### Student Complaint Portal

Online		<b><u>Complaint Portal site</u></b>
Phone		<b>(833) 625-3778 (833) MAKERPT</b>

### Rush Hotline

Online		<b><u>rush.ethicspoint.com</u></b>
Phone		<b>(877) 787-4009</b>

## Social Media

All are encouraged to engage with our social media channels and follow them for the latest Rush University news and announcements. Use social media to connect with the Rush University community and foster vibrant and thoughtful interaction.

### Smart Social Media Use

While we welcome participation, be aware of best practices for smart social media use. Using social media appropriately will help protect your personal and professional reputation.

- Don't post any details that can be used to identify a patient or student.
- Don't seek out "friends" who are patients or respond to such requests.
- Don't disclose personal information (home address, home and cell phone numbers, email addresses, etc.).
- Don't use abusive language, ethnic and racial slurs or hateful speech.

In addition, no student may speak on behalf of Rush or use a Rush seal or logo in any form of social media. For more information, Rush University Medical Center's full social media policy can be found on Inside Rush.



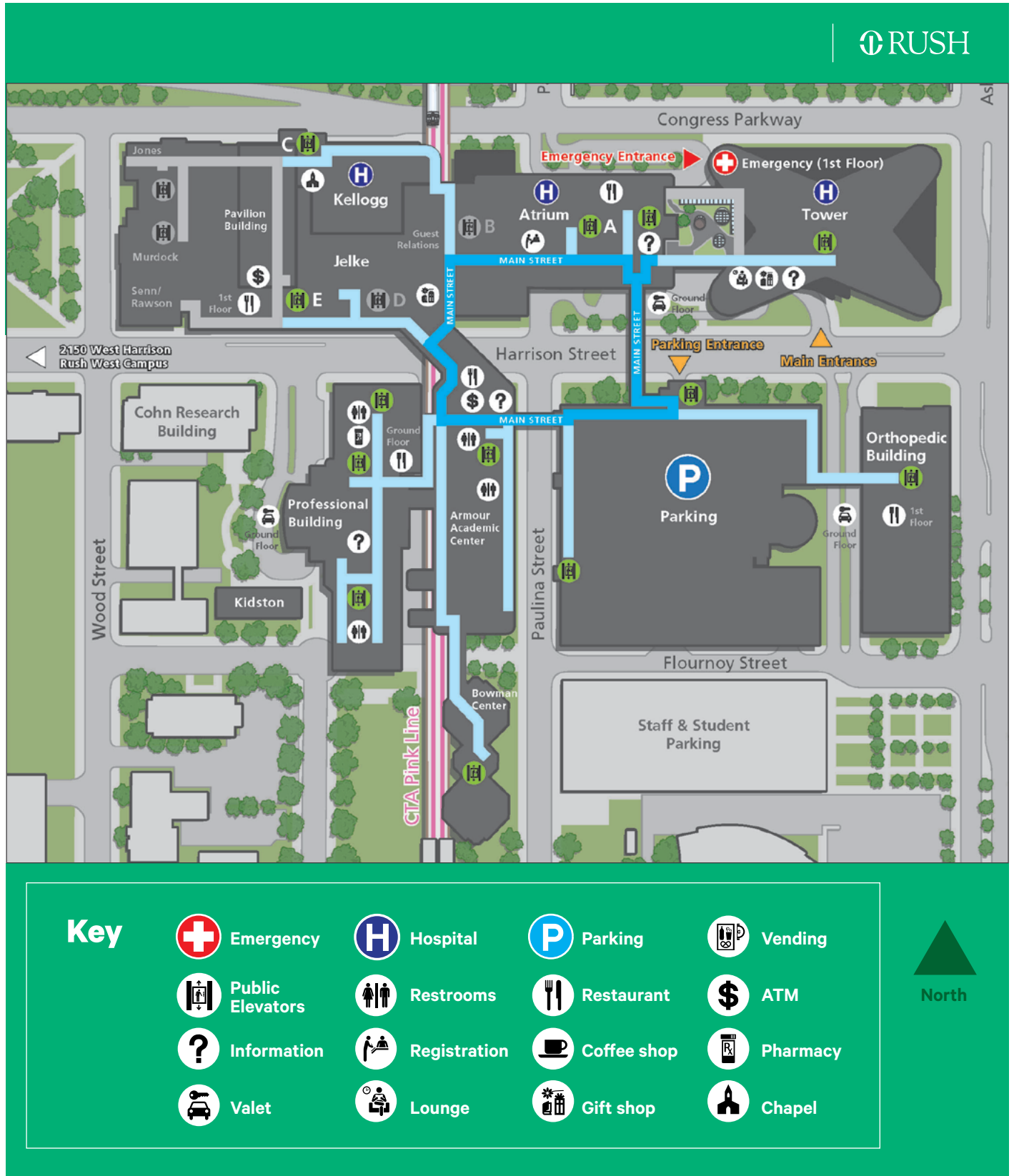
#rushuniversity

#rushu



# Rush University Campus Map

## Armour Academic Building



**Welcome to Rush University!**

---

Excellence is just the beginning.