

# Plastic Embedded Sectioning Tissue Surgeon Laser Microtome

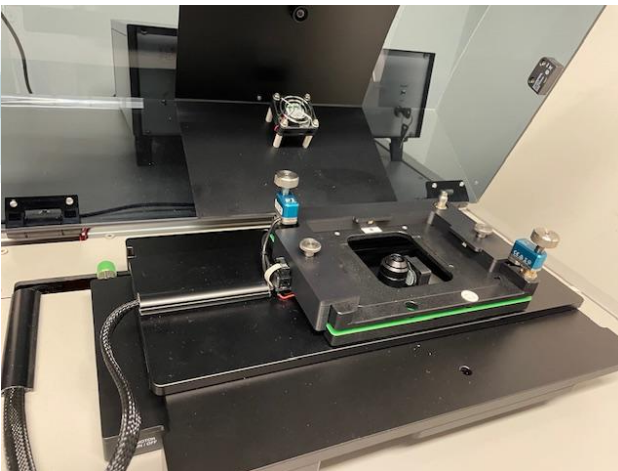
- Contact- and thermal-free sectioning method
- Thin sections ~20 μm to < 200 μm thickness
- Various histopathology staining available



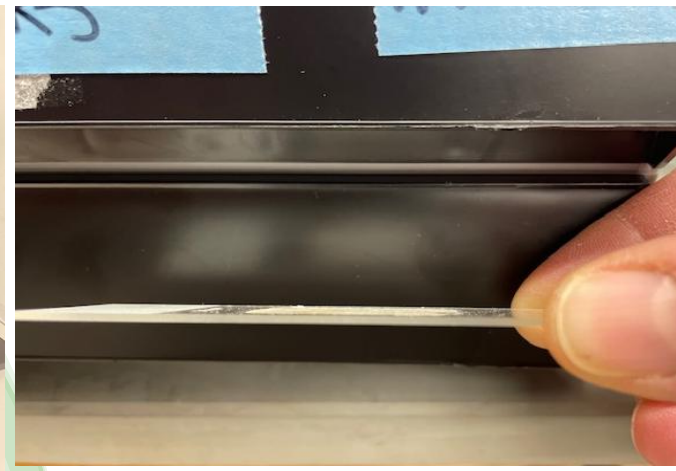
The TissueSurgeon laser microtome



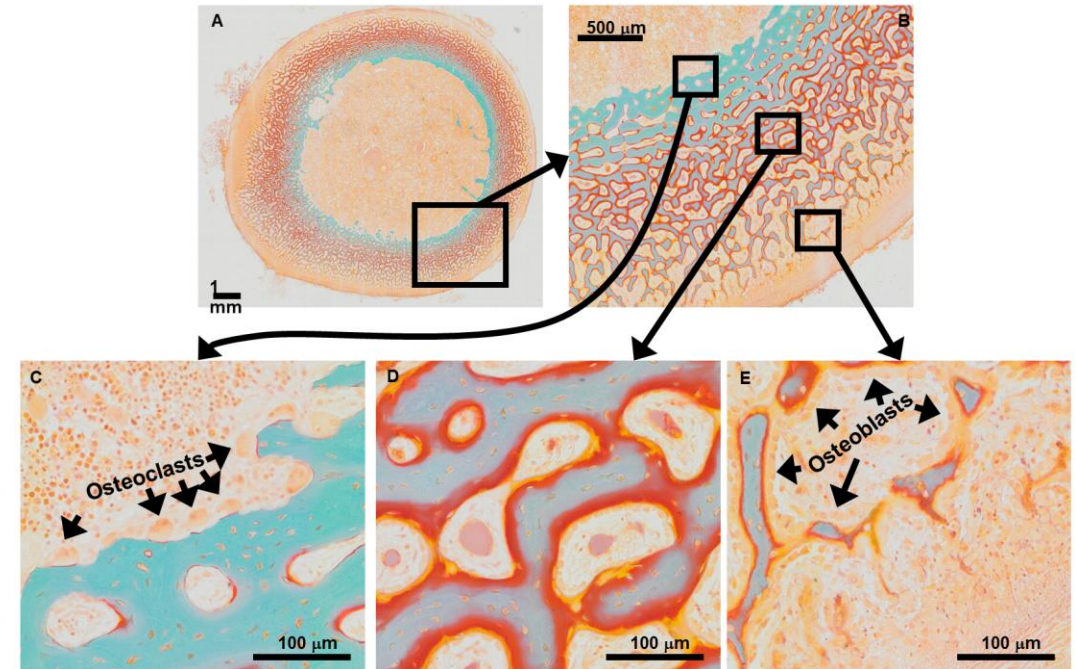
Thin section mounted to slide



Internal view of stage and objective



Example of thin section



Bone, Goldner's Trichrome

## Contact Us for further details:

Dr. Brittany Wilson PhD  
[brittany\\_m\\_wilson@rush.edu](mailto:brittany_m_wilson@rush.edu)  
Core Lab Manager

Dr. Meghan Moran PhD  
[meghan\\_moran@rush.edu](mailto:meghan_moran@rush.edu)  
Core Lab Director