

Rush University

# Enrollment At-A-Glance Report

## Fall 2025

**Prepared by the:**  
Office of Institutional Effectiveness

## About Rush University

Rush University is a private health sciences institution based in the Illinois Medical District, near Chicago’s Loop. We offer more than 24 degree and certificate programs across medicine, nursing, allied health and biomedical research; more than 60 postgraduate training programs for medical residents and fellows; and continuing education options.

The University is located on the campus of Rush University Medical Center, a nationally ranked academic medical center specializing in leading-edge patient care and research.

Rush University offers a wide range of education and training options to prepare students for the next step in their health care career. Academic programs are offered through our three colleges:

- **Rush Medical College** (founded in 1837)
  - Effective October 23, 2023, all programs associated with The Graduate College were formally moved to Rush Medical College – Division of Translational Science.
- **Rush University College of Nursing** (founded in 1885)
- **The College of Health Sciences at Rush University** (founded in 1975)

## Mission

Rush University champions a learning environment in health and biomedical sciences through collaboration, education, research and equity for our students, faculty, staff and the communities we serve.

## Vision

Rush University is a model for improving health through innovative research and transformative education in a culture of excellence and equity.

## Values

Rush University’s core values — innovation, collaboration, accountability, respect and excellence — are the roadmap to our mission and vision.

These five values, known as our I CARE values, convey the philosophy behind every decision Rush employees make.

Rush employees also commit themselves to executing these values with compassion. This translates into a dedication — shared by all members of the RUSH community — to providing the highest quality patient care.

**Robert S.D. Higgins, MD, MSHA**  
President, Rush University  
Chief Academic Officer, Rush University System for Health  
Acting Dean, Rush Medical College

**Julie Hoff, PhD, RN, FNAP, FAAN**  
Provost and Senior Vice President, Rush University

**Christine M. Kennedy, PhD, RN, FAAN**  
Dean, College of Nursing

**Jason S. Turner, PhD, MAE**  
Interim Dean, College of Health Sciences

**David Katz, PhD, ABPP**  
Vice Provost, Academic Affairs, and Chief Knowledge Officer

**Deborah Martin, PhD**  
Vice Provost, Student Affairs

**Gayle B. Ward, JD**  
Associate Vice President, University Operations

**Vince Gattuso, MBA**  
Chief Financial Business Officer

**Princess L. J. Currence, DSW, MSW**  
University Diversity, Equity and Inclusion Officer

The Fall 2025 Enrollment-At-A-Glance Report provides a snapshot of student enrollment data to support institutional planning, accreditation, and data transparency. Information included in the report is based on data obtained from the Student Information System as of the official Census Date—September 11, 2025. Students not registered on or by this date are excluded.

The Enrollment-at-a-Glance report provides a five-year overview of student headcount, demographic trends, and degree completions as well as a comparison of budgeted vs. actual enrollments using budget data obtained from the University Finance Team.

This Executive Summary highlights key data points from the Fall 2025 Enrollment-at-a-Glance Report.

Overall, the **University met its budgeted enrollment target** for Fall 2025. The College of Health Sciences and the College of Nursing each met their respective enrollment targets, however, Rush Medical College did not due to lower overall enrollment in its Division of Translational Science.

Student Headcount

Fall 2025 total headcount increased by 1% compared to Fall 2024 (2796 vs. 2769), despite decreases in enrollment for CON and RMC. The overall increase in enrollment is primarily driven by a 50% increase in new, non-degree seeking students (i.e., students-at-large), followed by a slight increase in CHS enrollment.

The College of Nursing accounted for 42% of Fall 2025 student headcount, followed by the College of Health Sciences (31%), Rush Medical College (25%), and non-degree seeking students (3%).

Detailed below are the most significant year-over-year changes by college.

- **College of Nursing (-1%, -10 students)**
  - **Post-Graduate Nursing, Certificate (-5 students)**
    - Decreased enrollment in the Pediatric Acute Care NP Cert program
- **College of Health Sciences (+3%, +22 students)**
  - **Bachelor’s Degree (BS) Students (+12 students)**
    - Admitted larger cohorts in Fall 2024 and Fall 2025 for **Health Sciences, BS and Imaging Sciences, BS** programs
  - **Master’s Degree (MS) Students (+11 students)**
    - Admitted larger cohort in Fall 2024 for **Speech Language Pathology, MS** program
- **Rush Medical College (-2%, -13 students)**
  - **Medical (MED) Students (-8 students)**
    - Increase in M3 students not meeting requirements to advance to M4
  - **Research Doctorates (-5 students)**
    - Admitted fewer **Integrated Biomedical Sciences, PhD** students due to loss of DEI grant.

Student Demographics

- Professional doctorates comprised **55%** of the total student population; master’s students **32%**; research doctorates **5%**; undergraduates **5%**, certificates **1%**; and non-degree seeking students **3%**.
- 79%** of Rush students identify as female, **20%** male, and **1%** other/unknown.
- The average age of the student body is 30 years.
- Approximately **49% of the student population are racial minorities**, with 28% of the student population classified as an underrepresented minority. The proportion of racial minority students has increased since 2020.

New Student Headcount

Fall 2025 new student headcount **increased by 4%** compared to Fall 2024. Despite decreases in total student headcount for CON and RMC, their new student headcount increased. CHS, however, experienced a small decline in new students (despite experiencing growth in total student headcount).

Detailed below are the most significant year-over-year changes by college for **new students**.

- College of Nursing (+5%, +13 students)**
  - Professional Doctorates (+12 students)**
    - Admitted more students to the Doctor of Nursing Practice, DNP program
- College of Health Sciences (-2%, -7 students)**
  - Bachelor’s Degree (BS) Students (-5 students)**
    - Admitted less students in **Imaging Sciences, BS** program
  - Master’s Degree (MS) Students (-4 students)**
    - Admitted larger cohort in Fall 2024 for **Speech Language Pathology, MS**
    - Admitted larger cohort in Fall 2025 for **Health Systems Management, MS**
- Rush Medical College (+3%, +5 students)**
  - Master’s Degree (MS) Students (+7 students)**
    - Admitted more students to the **Clinical Research, MS** program
    - Admitted less students to the **Biotechnology, MS** program

Degrees Awarded

- The University awarded 895 degrees during the 2024-2025 academic year**, a **5%** decrease compared to prior year. Rush awarded fewer degrees this year across most degree types (i.e., Master’s, PhD, Professional Doctorates, Post-Baccalaureate Certificates) with the exception of Bachelor’s degrees and Post-Master’s Certificates.

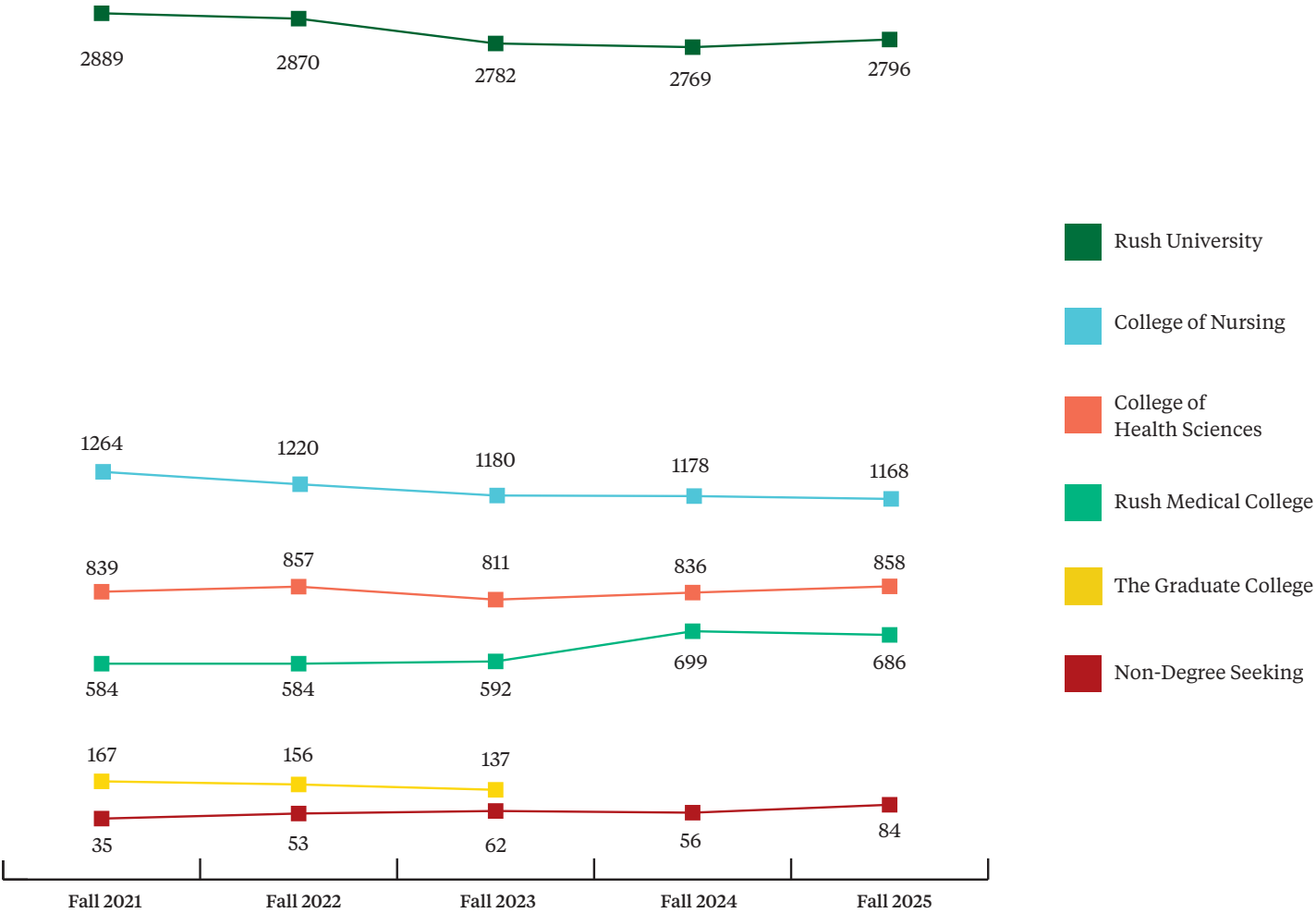
Section 1

Total Headcount

1.1 Total Headcount by College

Headcount by College					
College/Term	Fall 2021	Fall 2022	Fall 2023	Fall 2024	Fall 2025
College of Health Sciences	839	857	811	836	858
College of Nursing	1264	1220	1180	1178	1168
Rush Medical College	584	584	592	699	686*
The Graduate College	167	156	137	—	—*
Non-Degree Seeking	35	53	62	56	84
Rush University	2889	2870	2782	2769	2796

\*Beginning Fall 2024, The Graduate College transitioned to Rush Medical College as the Division of Translational Science



1.2 Total Headcount by Program

Enrollment by Program					
College of Health Sciences (CHS)	Fall 2021	Fall 2022	Fall 2023	Fall 2024	Fall 2025
Audiology, AuD	50	52	53	54	51
Cardiovascular Perfusion, MS	38	40	40	41	42
Clinical Laboratory Management, MS	38	42	42	38	39
Clinical Nutrition, MS	49	54	53	53	55
Health Sciences, BS	50	56	50	45	51
Health Sciences, PhD	53	53	57	52	53
Health Systems Management, MS	95	102	94	107	108
Imaging Sciences, BS	39	37	51	63	69
Medical Laboratory Science, MS	49	48	41	46	47
Occupational Therapy Doctorate	110	110	106	109	113
Physician Assistant Studies, MS	87	86	92	91	87
Respiratory Care, BS	1	—	—	—	—
Respiratory Care, MS	43	38	33	38	37
Specialist in Blood Bank Technology, Cert.	14	9	8	11	8
Speech Language Pathology, MS	95	108	72	58	68
Vascular Ultrasound, BS	28	22	19	30	30
Total College of Health Sciences	839	857	811	836	858

1.2 Total Headcount by Program

College of Nursing (CON)	Fall 2021	Fall 2022	Fall 2023	Fall 2024	Fall 2025
Masters of Science in Nursing, MSN	351	341	340	334	334
PhD in Nursing	30	31	33	31	30
Post-Graduate Nursing, Cert.	18	14	9	13	8
Doctor of Nursing Practice, DNP	865	834	798	800	796
Total College of Nursing	1264	1220	1180	1178	1168

Rush Medical College (RMC)	Fall 2021	Fall 2022	Fall 2023	Fall 2024	Fall 2025
M1	157	147	143	146	148
M2	149	152	149	143	141
M3	133	148	151	138	142
M4	145	137	149	155	143
Total RMC, MED	584	584	592	582	574
RMC, Division of Translational Science	Fall 2021	Fall 2022	Fall 2023	Fall 2024	Fall 2025
Biotechnology, MS	—	—	—	24	19
Clinical Research, MS	—	—	—	29	30
Integrated Biomedical Sciences, MS	—	—	—	13	17
Integrated Biomedical Sciences, PhD	—	—	—	51	46
Total RMC, DTS	0	0	0	117	112
Total Rush Medical College	584	584	592	699	686

1.2 Total Headcount by Program

Graduate College (GC)	Fall 2021	Fall 2022	Fall 2023	Fall 2024	Fall 2025
Biotechnology, MS	34	35	32	—	—
Clinical Research, MS	47	45	38	—	—
Integrated Biomedical Sciences, MS	18	10	9	—	—
Integrated Biomedical Sciences, PhD	68	66	58	—	—
Total Graduate College	167	156	137	0	0

Non-Degree Seeking	Fall 2021	Fall 2022	Fall 2023	Fall 2024	Fall 2025
CHS, SAL	—	1	13	7	14
CON, SAL	34	52	45	49	69
GC/DTS, SAL	1	—	4	—	1
Total Non-Degree Seeking	35	53	62	56	84

1.3 Headcount by Degree Level and Full-time/Part-time Status

Headcount Enrollment by Degree Level										
	Fall 2021		Fall 2022		Fall 2023		Fall 2024		Fall 2025	
	N	% of Total	N	% of Total	N	% of Total	N	% of Total	N	% of Total
Undergraduate Students	118	4%	115	4%	120	4%	137	5%	150	5%
Graduate Students (MS/MSN)	944	33%	949	33%	886	32%	872	31%	883	32%
Research Doctorates (PhD)	151	5%	150	5%	148	5%	134	5%	129	5%
Professional Doctorates (AUD, OTD, DNP, MD)	1609	56%	1580	55%	1549	56%	1545	56%	1534	55%
Certificates	32	1%	23	1%	17	1%	24	1%	16	1%
Non-Degree Seeking	35	1%	53	2%	62	2%	57	2%	84	3%
Rush University	2889	100%	2870	100%	2782	100%	2769	100%	2796	100%

Headcount Enrollment by Full-time/Part-time Status										
	Fall 2021		Fall 2022		Fall 2023		Fall 2024		Fall 2025	
	N	% of Total	N	% of Total	N	% of Total	N	% of Total	N	% of Total
Full-time	1811	63%	1809	63%	1758	63%	1762	64%	1744	62%
Part-time	1078	37%	1061	37%	1024	37%	1007	36%	1052	38%
Rush University	2889	100%	2870	100%	2782	100%	2769	100%	2796	100%

1.4 Headcount by Gender

Headcount Enrollment by Gender										
	Fall 2021		Fall 2022		Fall 2023		Fall 2024		Fall 2025	
	N	% of Total	N	% of Total	N	% of Total	N	% of Total	N	% of Total
Female	2211	77%	2220	77%	2153	77%	2161	78%	2206	79%
Male	678	23%	647	23%	615	22%	596	22%	567	20%
Other/Unknown	0	0%	3	0%	14	1%	12	0%	23	1%
Rush University	2889	100%	2870	100%	2782	100%	2769	100%	2796	100%

1.5 Headcount by Race/Ethnicity

Headcount Enrollment by Race/Ethnicity										
	Fall 2021		Fall 2022		Fall 2023		Fall 2024		Fall 2025	
	N	% of Total	N	% of Total	N	% of Total	N	% of Total	N	% of Total
American Indian or Alaskan Native	1	0%	1	0%	1	0%	0	0%	0	0%
Asian	350	12%	420	15%	433	16%	426	15%	456	16%
Black/African American	245	8%	252	9%	281	10%	305	11%	336	12%
Hispanic	378	13%	396	14%	414	15%	440	16%	454	16%
Two or More Races	53	2%	59	2%	76	3%	98	4%	108	4%
Native Hawaiian or Pacific Islander	0	0%	0	0%	3	0%	4	0%	3	0%
International/Non-Residents*	—	—	—	—	—	—	24	1%	23	1%
Unknown	133	5%	113	4%	93	3%	60	2%	69	2%
White	1729	60%	1629	57%	1481	53%	1412	51%	1347	48%
Rush University	2889	100%	2870	100%	2782	100%	2769	100%	2796	100%
All Minority**	1027	36%	1128	39%	1208	43%	1273	46%	1357	49%
URM***	624	22%	649	23%	699	25%	749	27%	793	28%

\* Prior to spring 2024, non-residents were included in the unknown category.

\*\* All Minority includes: American Indian/Alaska Native, Asian, Black/African American, Hispanic, Two or More Races, and Native Hawaiian/Pacific Islander

\*\*\* URM: Underrepresented Minorities includes: American Indian/Alaska Native, Black/African American, Hispanic, and Native Hawaiian/Pacific Islander

1.6 Headcount by Age Group

Headcount Enrollment by Age Group										
	Fall 2021		Fall 2022		Fall 2023		Fall 2024		Fall 2025	
	N	% of Total	N	% of Total	N	% of Total	N	% of Total	N	% of Total
Under 20 or 20	2	0%	0	0%	6	0%	15	1%	6	0%
21-25	886	31%	876	31%	843	30%	829	30%	859	31%
26-30	1120	39%	1126	39%	1120	40%	1093	40%	1129	40%
31-35	457	16%	457	16%	404	15%	397	14%	367	13%
36-40	191	7%	187	7%	194	7%	202	7%	180	6%
Over 40	231	8%	224	8%	215	8%	233	8%	255	9%
Age Unknown	2	0%	0	0%	0	0%	0	0%	0	0%
Rush University	2889	100%	2870	100%	2782	100%	2769	100%	2796	100%
Average Age	29		29		29		30		30	



**Section 2**

**FY2024/2025**

**Budgeted vs. Actual Enrollments**

2.1 Budgeted vs. Actual Enrollment By College and Program

College of Health Sciences (CHS)	FY2025/2026 Budget (Fall 2025)	FY2025/2026 Actual (Fall 2025)	Difference
Audiology, AuD	50	51	<div></div> 1
Cardiovascular Perfusion, MS	42	42	<div></div> 0
Clinical Laboratory Management, MS	39	39	<div></div> 0
Clinical Nutrition, MS	50	55	<div></div> 5
Health Sciences, BS	48	51	<div></div> 3
Health Sciences, PhD	55	53	<div></div> -2
Health Systems Management, MS	90	108	<div></div> 18
Imaging Sciences, BS	60	69	<div></div> 9
Medical Laboratory Science, MS	28	47	<div></div> 19
Occupational Therapy Doctorate	110	113	<div></div> 3
Physician Assistant Studies, MS	89	87	<div></div> -2
Respiratory Care, MS	36	37	<div></div> 1
Specialist in Blood Bank Technology, Cert	7	8	<div></div> 1
Speech Language Pathology, MS	73	68	<div></div> -5
Vascular Ultrasound, BS	30	30	<div></div> 0
CHS, Student-At-Large	5	14	<div></div> 9
Total College of Health Sciences	812	872	<div></div> 60

2.1 Budgeted vs. Actual Enrollment By College and Program

College of Nursing (CON)	FY2025/2026 Budget (Fall 2025)	FY2025/2026 Actual (Fall 2025)	Difference
Masters of Science in Nursing, MSN	327	334	<div></div> 7
PhD in Nursing	28	30	<div></div> 2
Post-Graduate Nursing, Cert.	0	8	<div></div> 8
Doctor of Nursing Practice, DNP	776	796	<div></div> 20
CON, Student-At-Large	50	69	<div></div> 19
Total College of Nursing	1181	1237	<div></div> 56

Rush Medical College (RMC)	FY2025/2026 Budget (Fall 2025)	FY2025/2026 Actual (Fall 2025)	Difference
M1	146	148	<div></div> 2
M2	140	141	<div></div> 1
M3	138	142	<div></div> 4
M4	155	143	<div></div> -12
Total RMC, MED	579	574	<div></div> -5
Biotechnology, MS	28	19	<div></div> -9
Clinical Research, MS	27	30	<div></div> 3
Integrated Biomedical Sciences, MS	19	17	<div></div> -2
Integrated Biomedical Sciences, PhD	57	46	<div></div> -11
DTS, Student-At-Large	0	1	<div></div> 1
Total RMC, DTS	131	113	<div></div> -18
Total Rush Medical College	710	687	<div></div> -23

Rush University Total	2703	2796	<div></div> 93
-----------------------	------	------	----------------

### **Section 3**

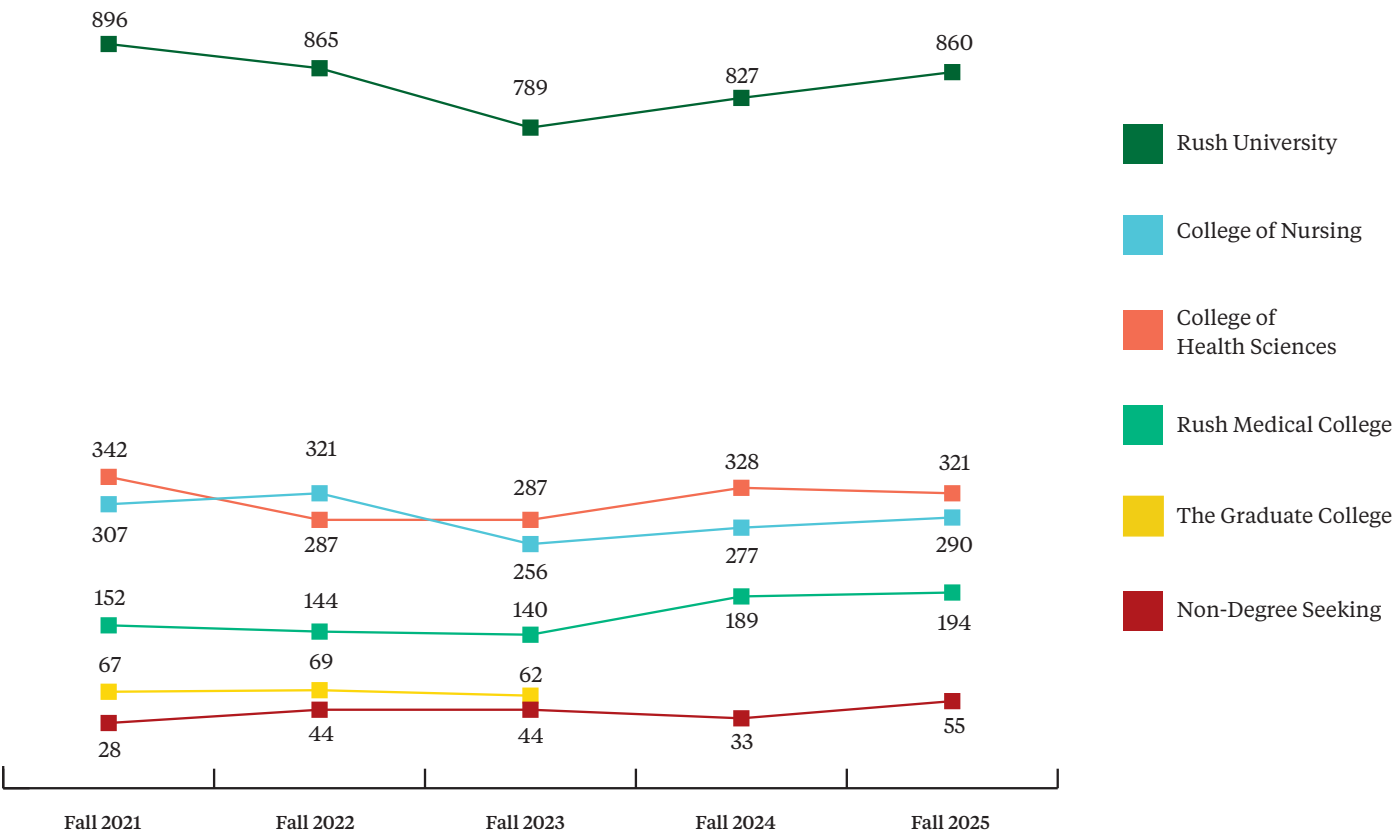
# **New Students Fall Enrollment**

3.1 New Students Enrolled by College

New Students* Enrolled by College					
College/Year	Fall 2021	Fall 2022	Fall 2023	Fall 2024	Fall 2025
College of Health Sciences	342	287	287	328	321
College of Nursing	307	321	256	277	290
Rush Medical College	152	144	140	189	194*
The Graduate College	67	69	62	—	—*
Non-Degree Seeking	28	44	44	33	55
Rush University	896	865	789	827	860

\*\*Beginning Fall 2024, The Graduate College transitioned to Rush Medical College as the Division of Translational Science

Note: New students who started in the Fall term only.



3.2 New Students Enrolled by Program

New Students Enrolled by Program					
College of Health Sciences (CHS)	Fall 2021	Fall 2022	Fall 2023	Fall 2024	Fall 2025
Audiology, AuD	16	18	14	10	11
Cardiovascular Perfusion, MS	20	20	20	21	21
Clinical Laboratory Management, MS	14	19	16	20	18
Clinical Nutrition, MS	24	25	28	28	25
Health Sciences, BS	23	11	15	20	19
Health Sciences, PhD	9	4	9	6	13
Health Systems Management, MS	61	37	51	47	56
Imaging Sciences, BS	8	17	22	30	26
Medical Laboratory Science, MS	29	20	22	25	23
Occupational Therapy Doctorate	36	36	34	40	38
Respiratory Care, MS	19	13	16	18	19
Specialist in Blood Bank, Cert.	11	8	6	9	6
Speech Language Pathology, MS	55	53	20	38	31
Vascular Ultrasound, BS	17	6	14	16	15
Total College of Health Sciences	342	287	287	328	321

College of Nursing (CON)	Fall 2021	Fall 2022	Fall 2023	Fall 2024	Fall 2025
Masters of Science in Nursing, MSN	93	88	82	95	97
PhD in Nursing	5	8	5	6	6
Post-Graduate Nursing, Cert.	5	4	3	3	2
Doctor of Nursing Practice, DNP	204	221	166	173	185
Total College of Nursing	307	321	256	277	290

3.2 New Students Enrolled by Program

Rush Medical College (RMC)	Fall 2021	Fall 2022	Fall 2023	Fall 2024	Fall 2025
Doctor of Medicine (MD)	152	144	140	144	144
Total Rush Medical College, MED	152	144	140	144	144
RMC, Division of Translational Science (DTS)	Fall 2021	Fall 2022	Fall 2023	Fall 2024	Fall 2025
Biotechnology, MS	—	—	—	24	19
Clinical Research, MS	—	—	—	7	17
Integrated Biomedical Sciences, MS	—	—	—	7	9
Integrated Biomedical Sciences, PhD	—	—	—	7	5
Total Rush Medical College (DTS)	0	0	0	45	50
Total Rush Medical College	152	144	140	189	194

Graduate College (GC)	Fall 2021	Fall 2022	Fall 2023	Fall 2024	Fall 2025
Biotechnology, MS	33	33	32	—	—
Clinical Research, MS	13	21	15	—	—
Integrated Biomedical Sciences, MS	6	3	6	—	—
Integrated Biomedical Sciences, PhD	15	12	9	—	—
Total Graduate College	67	69	62	0	0

Non-Degree Seeking	Fall 2021	Fall 2022	Fall 2023	Fall 2024	Fall 2025
CHS, SAL	—	1	13	5	13
CON, SAL	27	43	28	28	41
GC/DTS, SAL	1	0	3	0	1
Total, SAL	28	44	44	33	55

3.3 New Students Enrolled by Degree Level

New Students Enrolled by Degree Level										
	Fall 2021		Fall 2022		Fall 2023		Fall 2024		Fall 2025	
	N	% of Total	N	% of Total	N	% of Total	N	% of Total	N	% of Total
Undergraduate Students	48	5%	34	4%	51	6%	66	8%	60	7%
Graduate Students (MS/MSN)	367	41%	332	38%	308	39%	330	40%	335	39%
Research Doctorates (PhD)	29	3%	24	3%	23	3%	19	2%	24	3%
Professional Doctorates (AUD, OTD, DNP, MD)	408	46%	419	48%	354	45%	367	44%	378	44%
Certificates	16	2%	12	1%	9	1%	12	2%	8	1%
Non-Degree Seeking	28	3%	44	5%	44	6%	33	4%	55	6%
Rush University	896	100%	865	100%	789	100%	827	100%	860	100%

3.4 New Students Enrolled by Gender

New Students Enrolled by Gender										
	Fall 2021		Fall 2022		Fall 2023		Fall 2024		Fall 2025	
	N	% of Total	N	% of Total	N	% of Total	N	% of Total	N	% of Total
Female	684	76%	688	80%	596	76%	652	79%	670	78%
Male	212	24%	174	20%	182	23%	170	20%	178	21%
Unknown/Other	0	0%	3	0%	11	1%	5	1%	12	1%
Rush University	896	100%	865	100%	789	100%	827	100%	860	100%

3.5 New Students Enrolled by Race/Ethnicity

New Students Enrolled by Race/Ethnicity										
	Fall 2021		Fall 2022		Fall 2023		Fall 2024		Fall 2025	
	N	% of Total	N	% of Total	N	% of Total	N	% of Total	N	% of Total
American Indian or Alaskan Native	0	0%	0	0%	0	0%	0	0%	0	0%
Asian	141	16%	147	17%	124	16%	125	15%	147	17%
Black/African American	79	9%	80	9%	96	12%	95	12%	120	14%
Hispanic	125	14%	129	15%	135	17%	138	17%	146	17%
Two or More Races	19	2%	21	2%	30	4%	35	4%	34	4%
Native Hawaiian or Pacific Islander	0	0%	0	0%	2	0%	1	0%	0	0%
International/Non-Residents*	—	—	—	—	—	—	9	1%	8	1%
Unknown	25	3%	26	3%	26	3%	27	3%	25	3%
White	507	57%	462	53%	376	48%	397	48%	380	44%
Rush University	896	100%	865	100%	789	100%	827	100%	860	100%
All Minority**	364	41%	377	44%	387	49%	394	48%	447	52%
URM***	204	23%	209	24%	233	30%	234	28%	266	31%

\* Prior to spring 2024, non-residents were included in the unknown category.

\*\* All Minority includes: American Indian/Alaska Native, Asian, Black/African American, Hispanic, Two or More Races, and Native Hawaiian/Pacific Islander

\*\*\* URM: Underrepresented Minorities includes: American Indian/Alaska Native, Black/African American, Hispanic, and Native Hawaiian/Pacific Islander

**Section 4**

**Degrees Awarded**

AY2020-21 to AY2024-25

4.1 Degrees Awarded by College

Degrees Awarded by College					
	AY 2020-21	AY 2021-22	AY 2022-23	AY 2023-24	AY 2024-25
College of Health Sciences	241	320	332	345	306
College of Nursing	385	389	395	387	384
Rush Medical College	122	145	136	212	205*
The Graduate College	67	85	68	—	—*
Rush University	815	939	931	944	895

\* Beginning Fall 2024, The Graduate College transitioned to Rush Medical College as the Division of Translational Science

NOTE: Degrees Awarded between July 1 and June 30 of years indicated.

4.2 Degrees Awarded by Type

Degrees Awarded by Degree Type					
	AY 2020-21	AY 2021-22	AY 2022-23	AY 2023-24	AY 2024-25
Bachelor's	33	33	51	46	49
Master's	386	417	416	432	393
Research Doctorates (PhD)	18	18	20	26	19
Professional Doctorates (AUD, DNP, MD, OTD)	337	441	416	417	409
Post-Baccalaureate Certificate	27	19	21	17	14
Post-Master's Certificate	14	11	7	6	11
Rush University	815	939	931	944	895



