



# **Haimanot (Monnie) Wasse, MD, MPH**

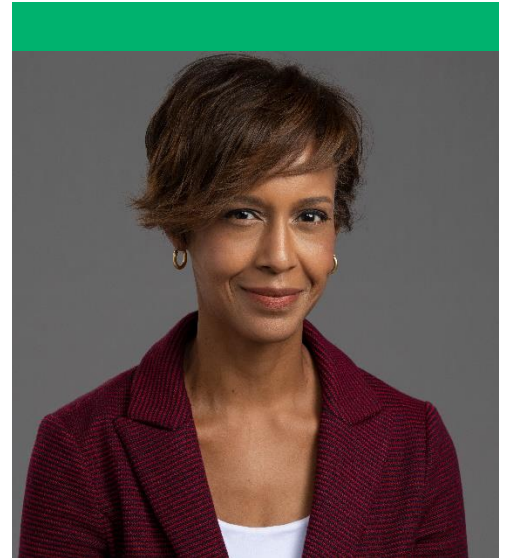
The Muehrcke Family Professor of Nephrology

## **Advancement of Medicine**

In 2024, I continued as the interim chair of the Rush Department of Internal Medicine and as the Chief of the Rush Division of Nephrology. I also serve as director of our interventional nephrology program, focused on the planning and maintenance of dialysis vascular access for patients with kidney diseases.

My ongoing professional mission combines my clinical work in interventional nephrology with clinical and translational research in the field of hemodialysis vascular access. A past president of the American Society of Diagnostic and Interventional Nephrology, or ASDIN, I continue to have leadership and speaker roles in a variety of local and international scientific and educational programs, including ASDIN, National Kidney Foundation, Vascular Access Society of the Americas and the American Society of Nephrology. Your generosity continues to bolster my research, clinical and academic efforts focused on the pathogenesis and treatment of dialysis vascular access dysfunction. In 2024, I spoke at seven national and international meetings, was elected treasurer of the Vascular Access Society of the Americas, served as co-director of two national and one international dialysis access symposium, and presented Grand Rounds at Baylor College of Medicine and Northwestern University.

I am also actively engaged in trainee and community education. The six-part virtual teaching series of dialysis vascular access lectures that I delivered for the Chicago Citywide Renal Fellow Lecture Series continues to be used to teach Chicago-area renal fellows and was recently shared with colleagues at the University of Washington. Moreover, I continue to host the Chicago Dialysis Access Club, composed of practitioners dedicated to improving dialysis vascular access care for patients in Chicago. Twice a year, I invite and host nationally-known speakers at our Symposium Dinner. During





the dinner, physicians, nurses and trainees from over 15 Chicago hospitals shared and discussed clinical cases while receiving updates on trends in dialysis access care and new technologies.

I also serve as the national principal investigator for the Ellipsys Vascular Access System post-market surveillance study and am a member of the stakeholder panel for the University of North Carolina, Chapel Hill THRIVE clinical trial, aimed at studying the impact of various education strategies for vascular access creation in advanced kidney disease.

## Clinical

Rush nephrology has two full-time employed general nephrologists and a nurse practitioner. Your support allowed **Andrea Pabon, DNP**, who provides nephrology inpatient services at Rush Select Hospital, to attend a course series on Managing Communication in Medicine through Case Western's School of Medicine.

We plan to initiate the Rush home dialysis program, and endowed funds will be used initially to support program staffing. This program is an important option to offer patients as they transition to renal replacement therapy, for the education of renal fellows, and to offer research opportunities for faculty and trainees.

## Education and Community Outreach

Your generosity continues to support community kidney disease screening programs in conjunction with the National Kidney Foundation so that we can identify kidney disease earlier among members of our community and halt disease progression.

## Research

Thanks to your generous support, I have been able to continue to support research in nephrology at Rush. Funds from the Muehrcke Family Professorship have been used to provide early-career faculty start-up funds for new studies and for program development. We also launched a basic science lecture series, and funds from the endowment have been used to support speaker expenses.



### Select Invited Presentations

- Inaugural William E Mitch MD, Endowed Nephrology Lectureship: "Innovations in Dialysis Access: The Future is Now," Houston, TX. 2024.
- Grand Rounds, Northwestern University: "Innovations in Dialysis Access," April 2024.
- Charing Cross International Symposium: "CX Debate: Endovascular AVF's are already standard of care: Include them in the guidelines," London, England 2024.
- National Kidney Foundation Annual Meeting : "Why, who and what to consider with an endovascular approach to vascular access," Long Beach, CA 2024.
- American Society of Nephrology Scientific Meeting: "Hemodialysis vascular access complications: A case-based discussion," San Diego, CA 2024.

### Publication Highlights- Abbreviated

- Identification of Inflammatory Clusters in Long-COVID Through Analysis of Plasma Biomarker Levels. *Front Immunol* 2024
- Novel classification of proximal forearm perforator vein in the planning and creation of percutaneous and surgical Gracz-type arteriovenous fistulae. *J Vasc Access*. 2024
- First in-human evaluation of a biological regenerative vascular conduit for hemodialysis access. *J Vasc Access*, 2024
- Management of vascular access inflow-outflow imbalance: A bimodal approach. *J Vasc Access*, 2024

### The Year Ahead: 2025 and Beyond

I will continue to support and mentor our trainees and faculty in their respective clinical and research efforts. Your support will be used to support training, teaching and research within the division and to establish the Rush home dialysis program. This program will provide outstanding, individualized care to our kidney patients.

### With Gratitude

Thank you for your support, which allows me to accomplish multiple activities that have led to increased education and research in nephrology at Rush, as well as outreach and education within Chicago communities and nationally.