

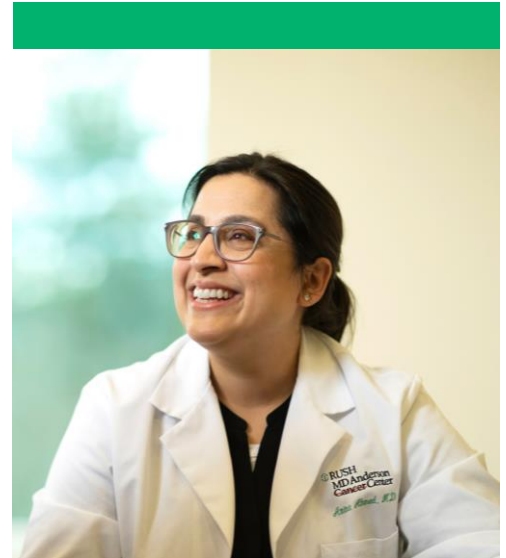


Amina Ahmed, MD

The Sheba Foundation Endowed Directorship
of the Rush Cancer Program

Advancement of Medicine

We have continued the work to build a system wide cancer program for RUSH that provides the highest quality care equally across all the sites that provide oncology care. Recently, this initiative is illustrated by the new RUSH MD Anderson Cancer Center at Rush Lisle, which opened in October 2024.



The cancer program has hired a director of the multiple myeloma program to grow the clinical program and continue groundbreaking translational research in the field. Considerable efforts are continuing to grow our cell therapy center and open new clinical trials to treat malignancies as well as benign conditions. Our clinical trials program is growing and will have additional trials from the MD Anderson Cancer Center portfolio opened at RUSH MD Anderson. We are also embarking on a partnership with Grail and will be offering Galleri testing to be a component of our high-risk cancer screening program lead by **Lisa Stempel, MD**. Finally, our diversity, equity and inclusion efforts include identifying disparities in cancer screening to deploy our lay community navigators to reach our patients.

In particular, the Sheba endowment supports our director of diversity, equity and inclusion for RUSH MD Anderson Cancer Center and supports novel investigator-initiated trials and pilot trials.

Accomplishments

- Chicago Magazine Top Doctor
- Crain's Chicago Business Notable Leaders in Healthcare
- Invited Presentation — Tempus, "Precision Medicine at Rush"
- Invited Presentation — MD Anderson Cancer Center Partners Summit



The Year Ahead: 2025 and Beyond

We will continue with the initiatives summarized above. We will continue operational growth in the community and continue patient navigation initiatives. We will plan for a new safety area within our larger quality and safety group. The endowments will continue to support infrastructure and technology, pilot trials and initiatives that improve the health of all patients.

With Gratitude

I sincerely thank our generous donors for their gifts to Rush and the cancer program. These gifts have enabled us to provide the highest quality cancer care to our patients. These gifts have built our clinical trials program, increased our community navigation and initiated our biobanking efforts. The funding has also helped new investigators start pilot trials which will lead to external funding and the hope that the research will lead to new treatments to help our patients with a cancer diagnosis live longer and better. Our entire cancer program is grateful for your incredible contributions.